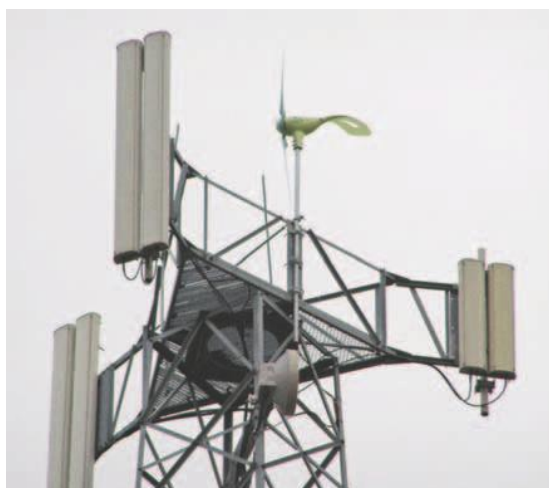


Water & Energy Savers
Suite 15, 18 Stirling Hwy,
Nedlands, Western Australia 6009
Tel: 08 9386 2366 Mob: 0408 928 530
Email wes@water.net.au

AirDolphin Australia
E: wes@water.net.au
T: 1800 1 Solar T: 08 9386 2366
<https://airdolphin.com.au/>

Airdolphin Mark-Zero Z-1000-24 Wind Turbine 1000W



Call Us Now

Tel: 1800 1 Solar Tel: 08 9386 2366 Email: wes@water.net.au

<https://airdolphin.com.au/>

Airdolphin Mark-Zero Z-1000-24 VDC Wind Turbine

SKU : ADWTZ100024

Airdolphin Mark-Zero Z-1000-24 Wind Turbine generates electricity 24/7 365 days a year. It's quieter, more efficient and precision engineered to deliver more energy at lower and dynamically changing wind speeds
It's the " **Rolls Royce** " of small scale wind turbines.

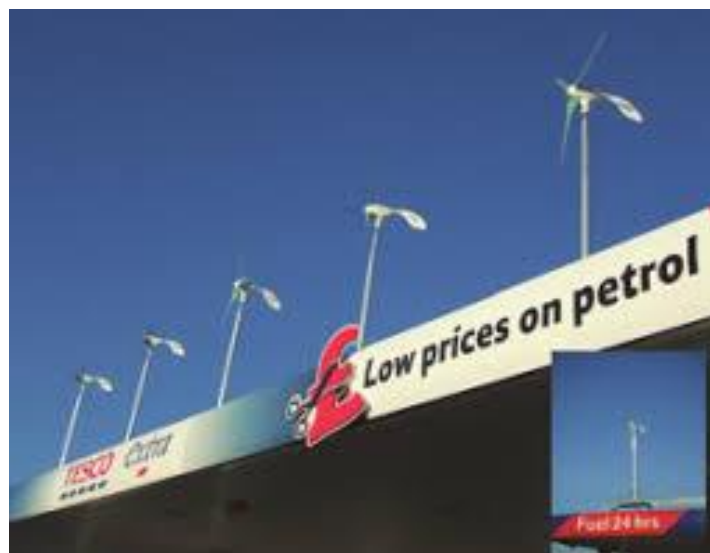
Designed as the super quiet "urban turbine" for cities, farms and roof tops and then engineered for rugged 20 year life in marine, offshore, island, harsh and rugged environments that require long life and continuous performance equipment.

Maximum Power - 2.3kW (20.0m/s, 44.7mph) - double speed of others
Rated Power - 1.0kW (12.5m/s, 27.9mph)
Start-up Wind Speed - 5.6 mph (2.5 m/s)
Power Assist Start-up Function to kick start rotation
Quietest small scale turbine in the market Generates electricity 24/7

Control System – Built in Power Management System (ZPMS) with:

1. Power-Assist Function
2. Seamless Power Control Functions
3. Safety Control
4. Battery Charge Management
5. 24V and 48V have built in Charge controllers
6. Data Communication System

Ultimate Visible Sustainable Environmental Statement



Description

Uses & applications include:

- off grid and isolated power systems,
- remote homes, farms and tourist facilities,
- ware houses and big box stores,
- 24/7 battery charging,
- emergency and instant power systems
- disaster response mobile power systems,
- remote environmental monitoring systems,
- mobile tower systems,
- offshore and island weather monitoring stations,
- yachts, cruisers and power boats,
- sailboats, house boats & recreational boating
- shopping centres and big box stores
- residential house, apartments and office blocks
- offshore beacons and remote monitoring equipment
- ocean side homes & cabins
- urban residential rooftop, apartments and industrial buildings
- water pumping systems
- security and emergency lighting systems

Precision engineered to deliver more energy at lower and dynamically changing wind speeds as well as high speed winds. It captures the low-speed, disturbed and quick direction changing winds which it does through these unique features:

- ✓ Power Assist Start-up function automatically rotates at 10 seconds per minute in low wind conditions, to kick-start rotation.
- ✓ Swing Rudder Tail System allowing for instant wind direction tracking
- ✓ Seamless responding rotor with three ultra-light carbon fiber blades, embossed to dramatically reduce air flow noise.
- ✓ Quietest small scale turbine in the market.
- ✓ Ultra-Lite Design (38.5 lbs)
- ✓ Produces power at up to 50m/s wind speed, which is more than double speed of other existing systems.

Want to know more Email: wes@water.net.au with your questions and queries and we will get back to you immediately we have your answers.

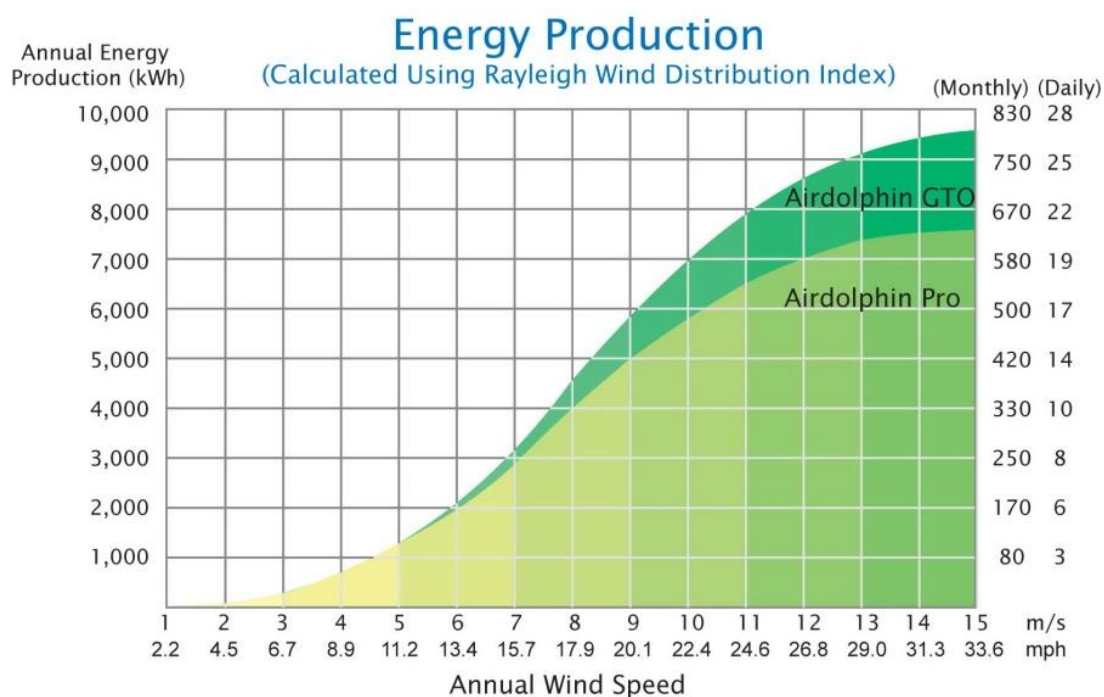
If you want an instant answer Call **1800 1 Solar** or Tel: +61 8 9386 2366 .

Features:

- 1 year warranty
- Designed for rugged 20 year life
- Low mass High Tech Foam Filled Carbon Fiber Composite blades
- Low Speed start up at 2.5 m/s (5.6 mph)
- Dual Brush system provides for maximum power transfer
- Brushless neodymium alternator
- 1000 W at 12.5 m/s (28 mph)
- Rated to 65.0 m/s (145 mph) winds
- Mounts on standard 1.9" diameter mast
- Super quiet
- Neighbour Friendly

Zephyr Airdolphin Mark-Zero Wind Turbines are built with bolt-less self-fitting body parts, inspired by Japanese traditional block puzzle craftsmanship.

This technique ensures precise, exact, quality engineering that ensures long life performance and provides superb resistance to adverse weather conditions, greatly minimizing maintenance requirements.

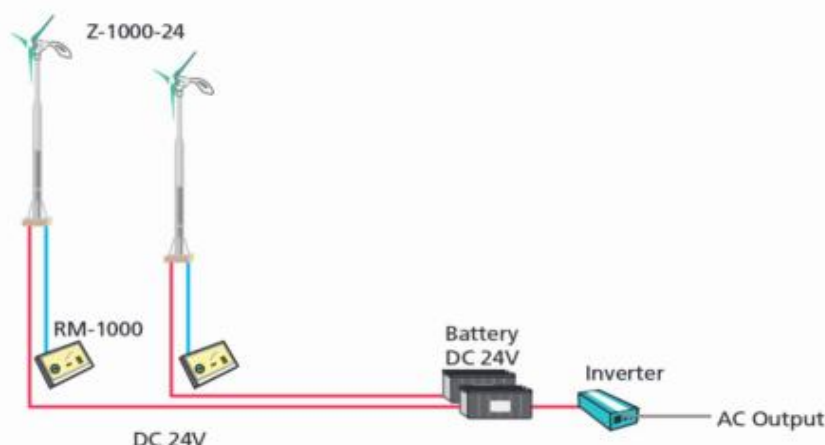


Specifications

Manufacturer / Brand	Zephyr AirDolphin
Model / Part. No.	Z-1000-24
Wind Turbine Type	Horizontal axis, up-wind
Voltage:	24 VDC & 48 VDC PRO
Max Rotor Speed	1600rpm (20m/s, 44.7mph)
Maximum Power	2.3 kW (20m/s, 44.7 mph)
Power / Square Meter	393W/m ² (36.5W/ft ²) (at rated power)
Output Voltage	25VDC
Start-up Wind Speed	0m/s (Power-Assist Function)
Cut-in Wind Speed	2.5m/s, 5.6mph
Rated Power	1kW (12.5m/s, 27.9mph)
Rated Rotor Speed	1000 rpm
Weight	38.5 lbs (17.5 kg)
Rotor Diameter	1.8 metres (71 “)

Small Off-Grid System (24V)

This system is ideal for ensuring electrical supply in times of disaster and for camping vehicles, fishing boats and other leisure vehicles.



Specifications

Model Name	Airdolphin Mark-Zero						
Model Number	Z-1000						
Wind Turbine Type	Horizontal axis, up-wind						
Rotor Diameter	1,800mm						
Mass	17.5kg						
Tower Diameter	48.6mm						
Number of Blades	3						
Blade Material	Carbon-fiber skin						
Blade Mass (per piece)	380g						
Blade Method	Interlock hub mounting						
Body Material	Aluminum diecast						
Body Construction	Screw-free joints (based on traditional Japanese handicrafts)						
Product Finish	Teflon-based paint						
Power Generator	Synchronous-type, three-phase power generator with permanent neodymium iron boron magnet						
Control System	Built-in Zephyr-Original Power Management System (ZPMS) with: 1. Power-Assist Function 2. Stall Mode 3. Safety Control 4. Battery Charge Management 5. Data Communication System						
Protection Circuit	Built-in						
Data Logger	Built-in						
Yaw Control	Free yaw (360 degrees)						
Direction Control	Original Swing-Rudder System						
Output Control	Non-stop output control (incl. Stall Mode)						
Start-up Wind Speed	0m/s (Power-Assist Function)						
Cut-in Wind Speed	2.5m/s						
Cut-out Wind Speed	50m/s						
Survival Wind Speed	65m/s						
Rated Power	1,000W (12.5m/s)						
Rated Rotor Speed	1,250rpm						
Maximum Power (Instantaneous)	3,200W (20m/s)						
Maximum Rotor Speed (Instantaneous)	1,600rpm (20m/s)						
Mass per Watt	17.5g/W (at rated power)						
Power per Square Meter	393W/m ² (at rated power)						
Power Generation Features	Wind Speed (m/s)	Output (W)	Power Generation Amount	Avg. Wind Speed (m/s)	Per Day (kWh)	Per Month (kWh)	Per Year (kWh)
Normal Mode	3.5	27		3.0	1	20	240
	6.5	170		4.0	2	60	720
	10.0	620		5.0	3.6	110	1320
	12.5	1000		6.0	5	150	1800
	(at rated power)	(at rated power)		7.0	7.3	220	2640
	15.0	1780		8.0	8.6	—	—
	17.5	2520		9.5	12	—	—
Stall Mode	20.0	3200		10.0	13	—	—
	10.0	380		* Power generation figures are based on field test measurements and calculations from Rayleigh wind speed distribution.			
	20.0	320		* Power generation varies by installation site, wind quality, framework conditions, etc. The figures should only be used as a guide.			
	30.0	600		* Figures inappropriate on monthly/yearly basis are displayed as -			
40.0	400						
50.0	0						
Output Voltage (Normal Mode)	25V DC						
Braking System	Regenerative electromagnetic braking system						
Communication System (Signal Output)	RS-485						
Recommended Battery Capacity	Off-grid power system: 500 Ah or more / On-grid power system: 100 Ah or more						

AirDolphin Australia

E: wes@water.net.au T: 1800 1 Solar T: +61 8 9386 2366

www.airdolphin.com.au

Suite 15, 18 Stirling Highway, Nedlands, Western Australia, 6009